

PLATINUM TOOLS®

Toll Free Phone: 800.749.5783

Net Prowler Downloads

Net Prowler Application Installation

*Note: If you have a previous version of the Net Prowler Application, please uninstall the previous application before proceeding

1. Download the Net Prowler Application (2.18) from <https://www.platinumtools.com/support/software-updates>



Net Prowler™ Cabling and
Network Tester
P/N TNP700

NET PROWLER COMPANION
SOFTWARE VERSION 2.18:
Net Prowler application
2.18.zip

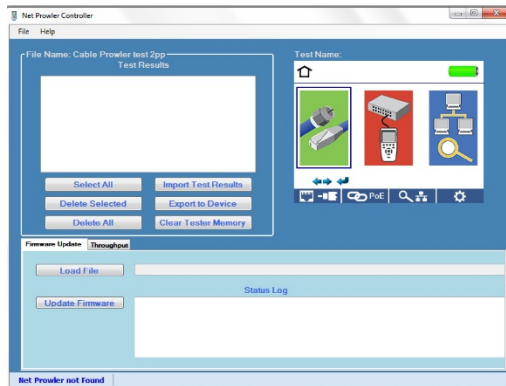
DOWNLOAD



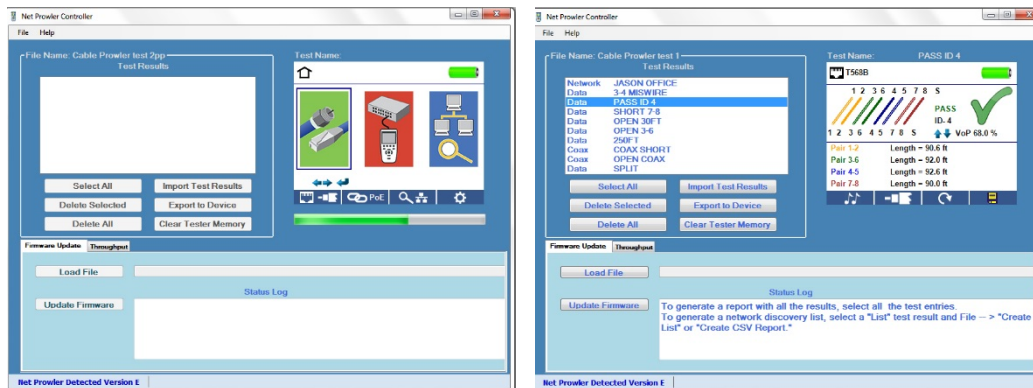
2. Save the Net Prowler Application Version 2.18.zip file to your computer. Extract the zip file contents. Open the extracted folder, open 2.18 and then double-click on “setup.exe” to begin the installation
3. Once the Net Prowler Application is installed it, will be available in the Windows Start Menu under programs and a shortcut will be on your desktop

Upload test results

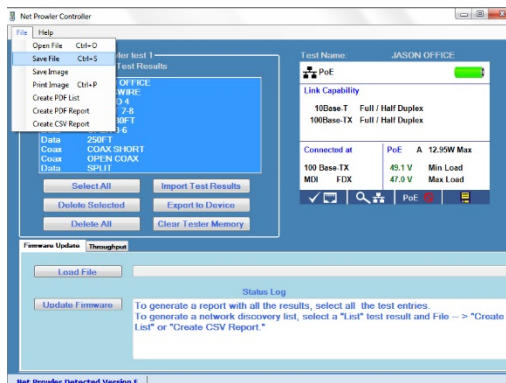
1. Power on your Net Prowler and plug it into your computer using the included USB cable
2. Open the Net Prowler application on your computer by double clicking on the application shortcut



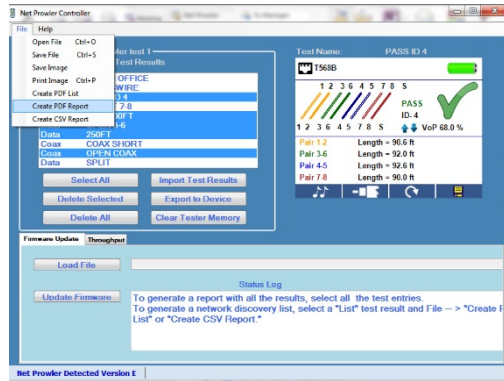
3. Click on "Import Test Results" to upload test results from the Net Prowler to the Net Prowler Application



4. To save test results to your computer, highlight the desired tests in the test results window or click "Select All", click on "File", click on "Save As". Enter a file name and save to the desired location



5. To create and save a report, highlight the desired tests in the test results window or click "Select All", click on "File", click on the the desired file type (PDF, CSV), enter a file name, and save to the desired location



Net Prowler Firmware Update

1. Before downloading the Firmware update, you must identify which firmware file is compatible with your Net Prowler

There are three firmware versions:

- Version 2.044
- Version C 2.044
- Version E 2.102

2. To identify which version to download; power on the Net Prowler, select the settings soft key, the firmware version will be displayed at the top of the screen



3. Download the appropriate firmware zip file and extract the firmware. To extract the firmware, right click on the zip file, then click on “Extract All”
4. Open the Net Prowler application
5. Power on your Net Prowler and plug it into your computer using a micro USB cable.
6. On the application: Click on “Load File”, navigate to and click on the firmware file you downloaded and extracted, then click on “Open”
7. Click on “Update Firmware”

If an error occurs during the download process, follow the steps below:

1. Close the Net Prowler application
2. Reset the Net Prowler by removing a battery and reinserting it
Note: The Net Prowler screen will remain dark, when the batteries are reinserted, as its still in firmware update mode
3. Restart the application. The application may not recognize the Net Prowler until the download is reinitiated

4. Follow the Net Prowler firmware Update instructions above

Note: The Net Prowler screen will remain dark during the entire process, which means it is in firmware update mode. The screen will display the home screen when the firmware has been installed successfully